

VEO

Thermal oil expansion vessel



Design pressure 5 bar

The expansion vessel is designed to absorb the oil volumetric changes caused by the temperature variation. It consists of a horizontal tank pressurised with nitrogen. The pressure changes from 1 bar with cold oil to 4 bar with oil at 280°C. The tank complies with the PED Directive 2014/68/EU.

It is made of P275GH carbon steel. KW EN10028-3, externally painted.

VEO is provided with the accessories required for the pressure and automatic level control. Switches, fuses and indicator lamps are located in the OPX heater control panel.

On request:

If the VEO expansion vessel is not paired with an ICI thermal oil boiler of the OPX or OPX REC series but rather to a boiler of a different brand, it is possible to request a control panel.

Standard equipment

Nitrogen supply system for the pressure control including:

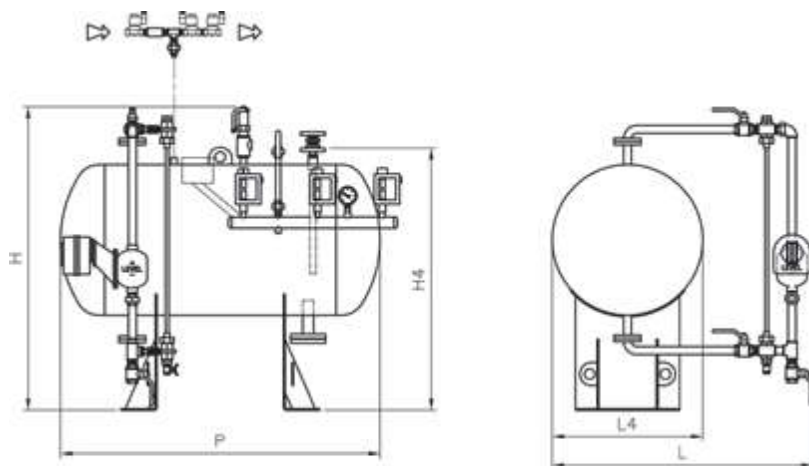
- Nitrogen manifold
- Manometer
- Pressure switch
- Nitrogen supply valve
- Safety pressure switch
- 2 loading solenoid valves
- 2 non-return valves
- Level indicator

Oil supply level control system including:

- Level float regulator with integrated low level alarm
- Oil load pump
- Safety valve certified according to PED Directive 2014/68/EU

TECHNICAL DATA

Model	Nominal pressure	Design temperature	Total volume H ₂ O	Empty weight
	bar	°C	lt	kg
VEO 200	5	300	200	190
VEO 400	5	300	400	300
VEO 600	5	300	600	340
VEO 800	5	300	800	390
VEO 1000	5	300	1000	440
VEO 1500	5	300	1500	500
VEO 2000	5	300	2000	570
VEO 3000	5	300	3000	850
VEO 6000	5	300	6000	1700



Dimensions

Model	H mm	H4 mm	L mm	L4 mm	P mm
VEO 200	1250	950	900	500	1320
VEO 400	1300	1160	1050	650	1380
VEO 600	1500	1350	1200	800	1380
VEO 800	1500	1350	1200	800	1780
VEO 1000	1500	1350	1200	800	2180
VEO 1500	1700	1500	1400	1000	2130
VEO 2000	1700	1500	1400	1000	2780
VEO 3000	1930	1750	1480	1250	2720
VEO 6000	2150	2055	1730	1500	3720

PRODUCT CODES

Model	Code
VEO 200	87170200
VEO 400	87170400
VEO 600	87170600
VEO 800	87170800
VEO 1000	87171000
VEO 1500	87171500
VEO 2000	87172000
VEO 3000	87173000
VEO 6000	87176000